

50Hz



GENERAL CATALOGUE

Edition 2022

www.pentax-pumps.it

Where there's water there's Pentax



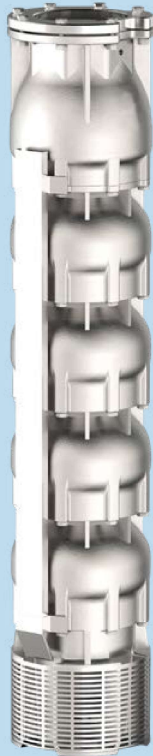
Viale dell'Industria, 1
37040 Veronella (VR) - Italia
Tel. +39 0442 489500
Fax +39 0442 489510
com@pentax-pumps.it
www.pentax-pumps.it

PENTAX s.p.a.



10-12LM & E14 lines

Deepwell Borehole



10LM line



12LM line



E14

Submersible multistage centrifugal pumps for 10", 12" and 14" wells. Check valve built into the delivery outlet. Pump flange for coupling with motors are made according to NEMA standards. Most common applications are civil and agricultural. All components are made of stainless steel with lost wax Microfusion technology. The standard material is AISI 304 stainless steel, alternatively the following materials are available on request: AISI 316 Steel, Duplex steel, AISI 904L Steel. Bushing bearings and wear-rings made of sand abrasion-resistant rubber, reverse-Thrust ring in PTFE/Graphite.

General operating data:

- Capacity up to 860 m³/h
- Pressure up to 800 m
- Hydraulic efficiency 10", up to 84,0%
- Hydraulic efficiency 12", up to 82,5%
- Hydraulic efficiency 14", up to 82,3%
- Pressure up to 80 bar
- Powers up to 400 kW
- Rotation speed up to 3600 rpm
- Maximum depth: 350 m
- Maximum quantity of permitted sand: 100 gr/m³
- Drinking water compatibility according to DM174 MEI >= 0,4 (EU directive No.547/2012)
- Performance tolerance: ISO9906-3B.

Construction features

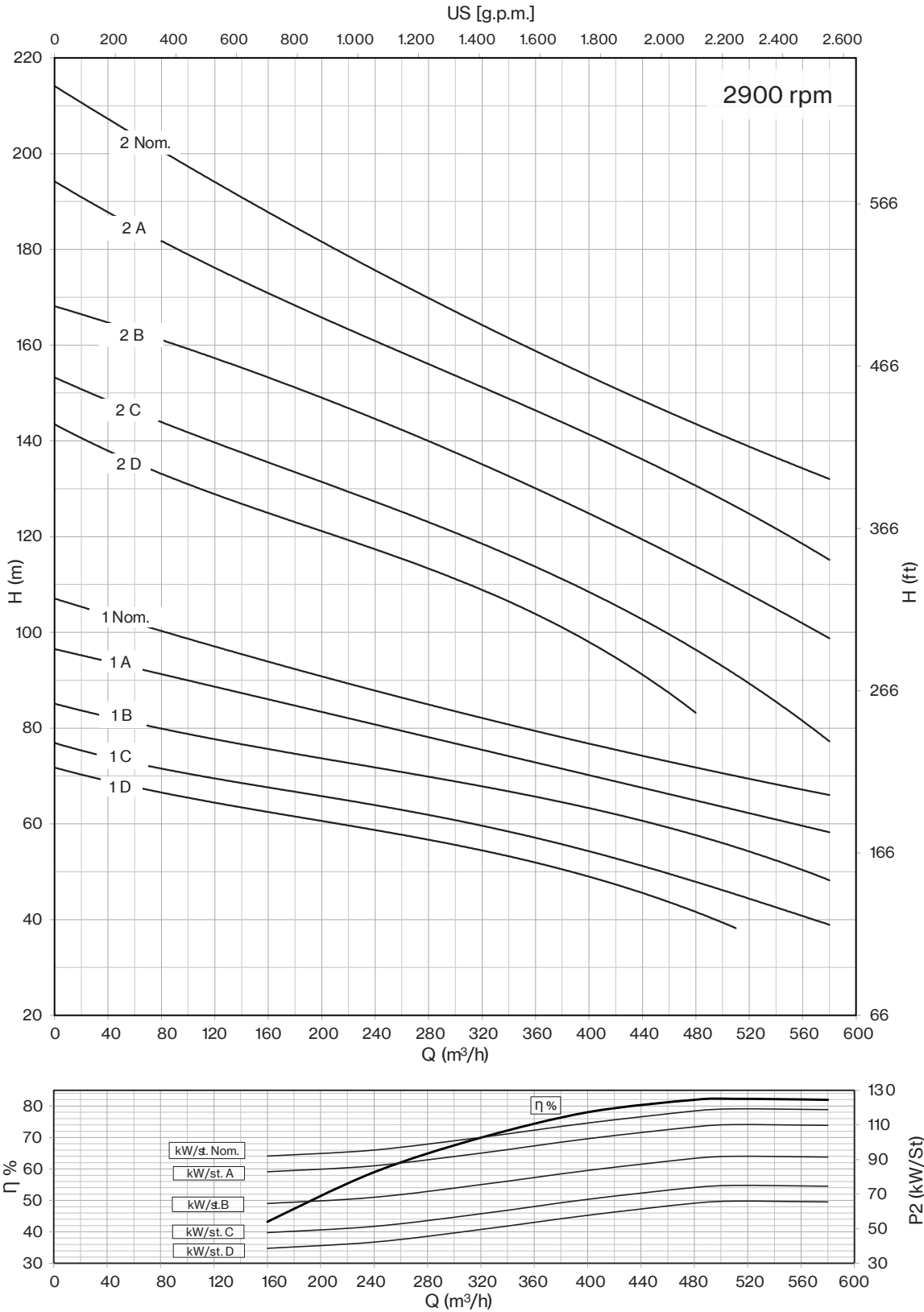
Suction and delivery outlet	AISI 304 (LMS) AISI 316 (LMX - EX) Duplex (LMD - ED) Cast iron (E)
Valve	AISI 304 (LMS) AISI 316 (LMX - EX) Duplex (LMD - ED) Cast iron (E)
Impellers and diffusers	AISI 304 (LMS) AISI 316 (LMX - EX) Duplex (LMD - ED) Cast iron (E)
Upper bushings	NBR rubber
Shaft pump side	AISI 304 (LMS) AISI 316 (LMX) Duplex (LMD) AISI 431 (E - EX - ED)
Quantity of sand in the water	max 100 g/m ³

Motor

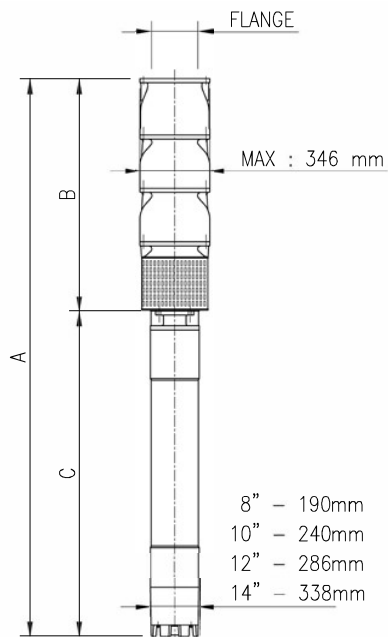
Asynchronous 2 pole	rewindable water cooled
Insulation class	Y (max 30 °C) - PPC winding type F (max 50 °C) - PE2+PA or LPE winding type
Protection degree	IP68
Liquid temperature	max 30 °C (max 50 °C on request)
Depth of immersion	max 350 m



E14A

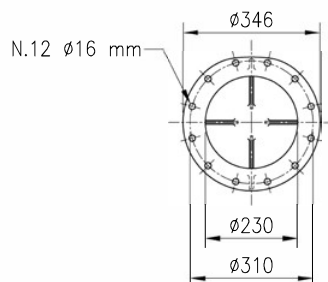


Motor 50 Hz - 2900 rpm				Q									
TYPE	Power		400 V	l/min l/sec m ³ /h	0	1333	4000	5333	6667	9000	10000	12500	14333
	HP	kW			A	0	22,2	66,7	88,9	111,1	150,0	166,7	208,3
					H[m]								
E 14 B/1 C	125	92	175,1	H[m]	73,5	72,5	68,0	63,5	57,8	44,0	36,5	14,0	
E 14 B/1 B	150	110	211,0		80,4	79,5	75,0	71,5	66,0	53,5	46,7	26,5	
E 14 B/1 A	175	130	245,3		87,0	84,0	79,0	77,0	73,8	66,0	61,5	45,5	29,0
E 14 B/1 Nom.	200	150	277,2		100,8	97,4	90,4	86,9	82,9	74,2	69,0	53,9	38,4
E 14 B/2 C	250	185	342,2		147,0	145,0	136,0	127,0	115,6	88,0	73,0	28,0	
E 14 B/2 B	300	220	430,0		160,7	159,0	150,0	143,0	132,0	107,0	93,4	53,0	
E 14 B/2 A	400	300	551,0		174,0	168,0	158,0	154,0	147,6	132,0	123,0	91,0	58,0
E 14 B/2 Nom.	400	300	551,0		201,6	194,8	180,8	173,8	165,8	148,4	138,0	107,8	76,8



Motor 50 Hz 2900 rpm	DIMENSIONS (mm)			Weight (kg)	
TYPE	A	B	C	M	P
E 14 B/1 C	2488	905	1583	270	184
E 14 B/1 B	2638	905	1733	300	184
E 14 B/1 A	2539	905	1634	385	184
E 14 B/1 Nom.	2639	905	1734	415	184
E 14 B/2 C	3159	1175	1984	480	260
E 14 B/2 B	3285	1175	2110	700	260
E 14 B/2 A	3455	1175	2280	775	260
E 14 B/2 Nom.	3455	1175	2280	775	260

Max Eff. % =	78,6
Max KW / St.: C - D.240mm =	91,8
Max KW / St.: B - D.250mm =	109,7
Max KW / St. A. - D.259mm =	129,6
Max KW / St. Nom. - D.274mm =	149,6

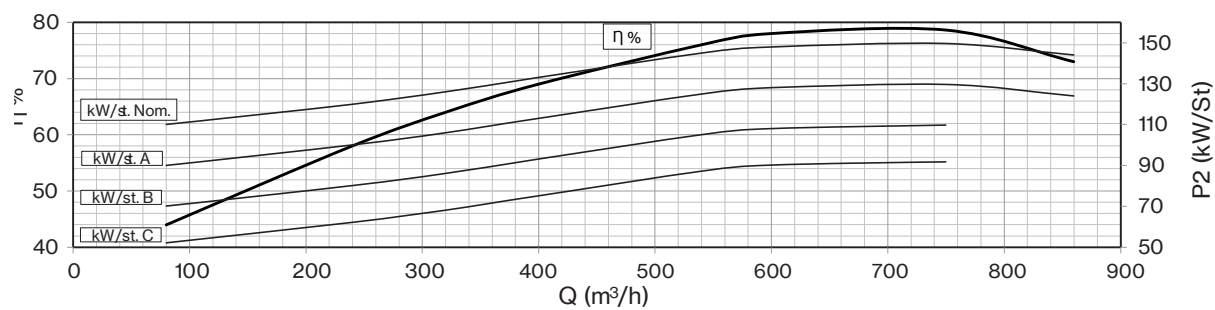
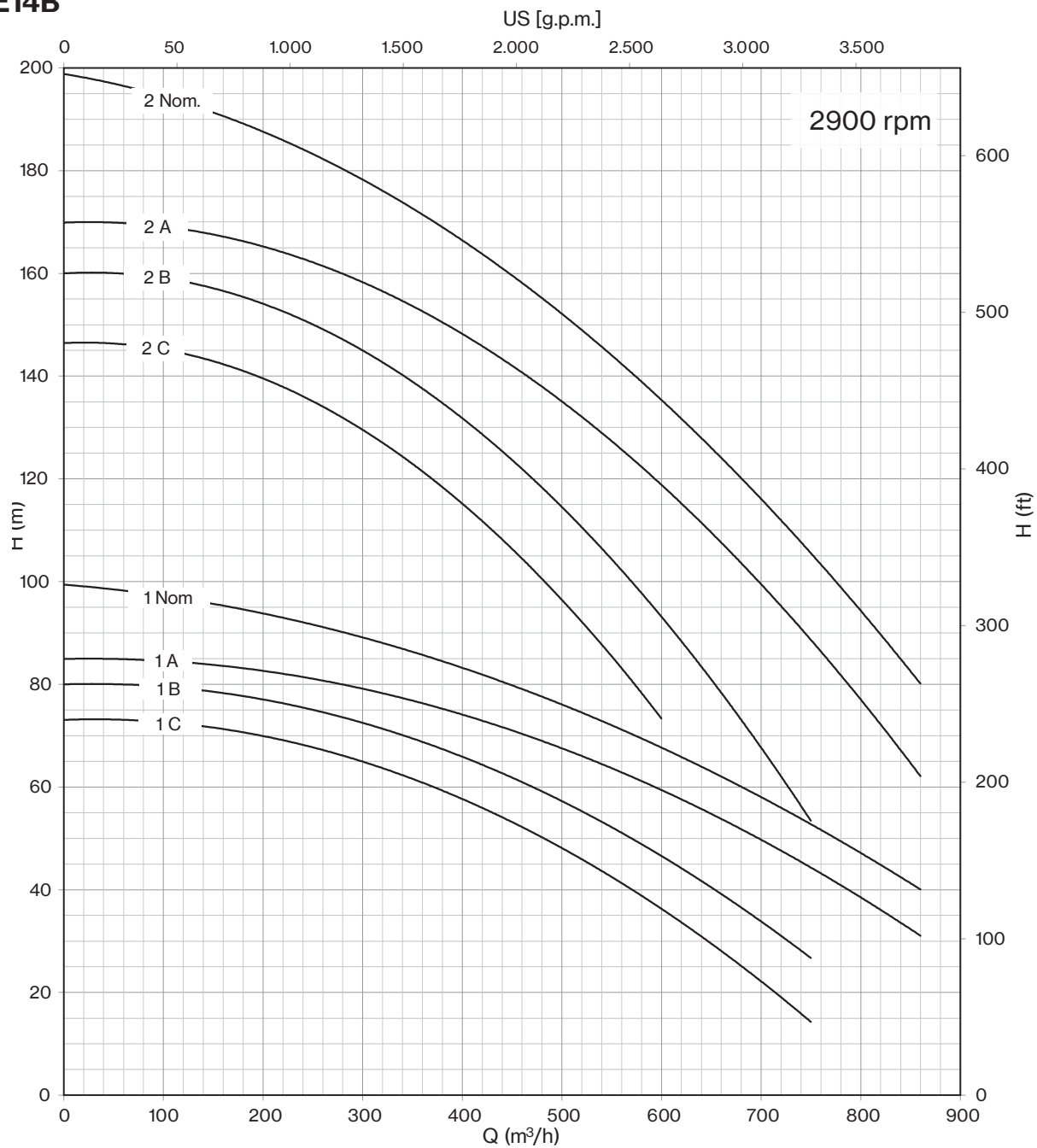


Q (flow)	25%	50%	75%	100%
NPSH (m)	6	6,4	8,6	16,

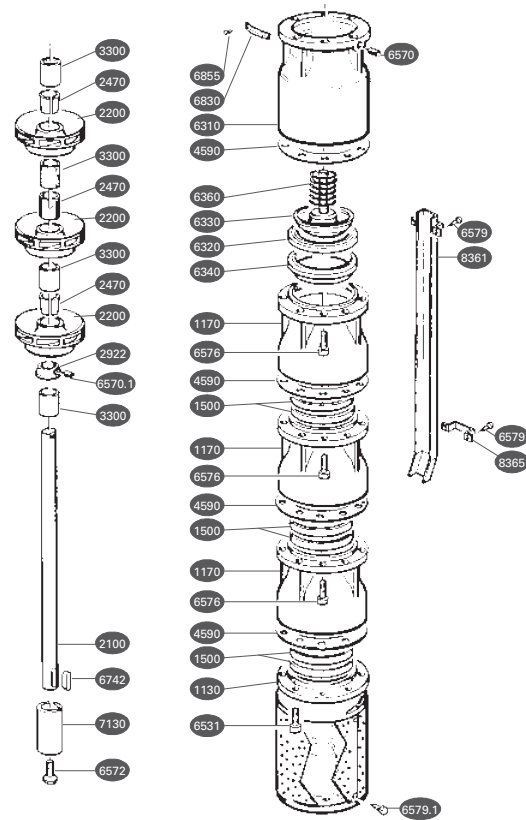
"D" Pump shaft in Duplex



E14B



E14 lines



REF.	DESCRIPTION	MATERIAL
1130	Support	Cast iron
1170	Diffuser	Cast iron
1170.1	Lat Diffuser	Cast iron
1500*	Wear ring	Rubber
2100	Shaft	Stainless steel
2200*	Impeller	Cast iron
2470*	Bushing	Steel
2922*	Sandguard	Brass
3300*	Bearing	Steel - rubber
4590*	Gland	Guarnital
6310	Valve body	Valve body / Cast Iron
6320	Valve housing	Rubber
6330	Washer	Stainless steel
6340	Housing ring	Cast iron
6360	Spring	Stainless steel
6531	Strainer	Stainless steel
6570	Screw	Stainless steel
6570.1	Screw	Stainless steel
6572	Screw	Stainless steel
6576	Screw	Stainless steel
6579	Screw	Stainless steel
6579.1	Screw	Stainless steel
6742	Key	Stainless steel
6830	Label	Stainless steel
6855	Pin	Stainless steel
7130	Joint	Stainless steel
8361	Sheat	Stainless steel
8365	Cable guard clamp	Stainless steel