

50Hz



GENERAL CATALOGUE

Edition 2022

www.pentax-pumps.it

Where there's water there's Pentax



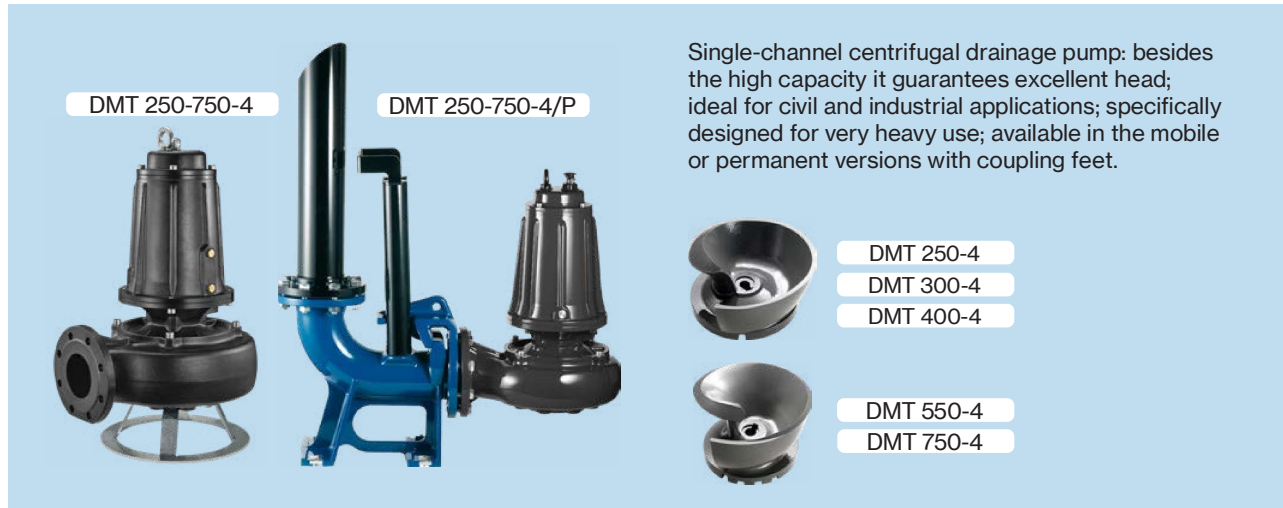
Viale dell'Industria, 1
37040 Veronella (VR) - Italia
Tel. +39 0442 489500
Fax +39 0442 489510
com@pentax-pumps.it
www.pentax-pumps.it

PENTAX s.p.a.




DM4

Drainage Single-channel



Single-channel centrifugal drainage pump: besides the high capacity it guarantees excellent head; ideal for civil and industrial applications; specifically designed for very heavy use; available in the mobile or permanent versions with coupling feet.

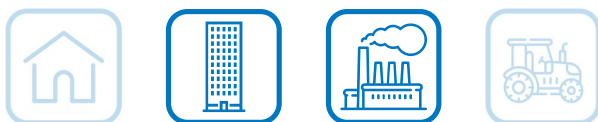
Construction features

Pump body	cast iron
 Impeller	cast iron
Mechanical seal	double seal with oil barrier; silicon carbide on pump side, ceramic-graphite on motor side
Motor shaft	stainless steel AISI 304
Passage of solids	60 mm (DMT250/4-400/4) 90 mm (DMT550/4-750/4)
Depth of immersion	max 20 m
Liquid temperature	0 - 40 °C
Cable	H07 RNF, 10 m
Bolts	A2 stainless steel
Foot support	galvanized iron
Gaskets	NBR rubber

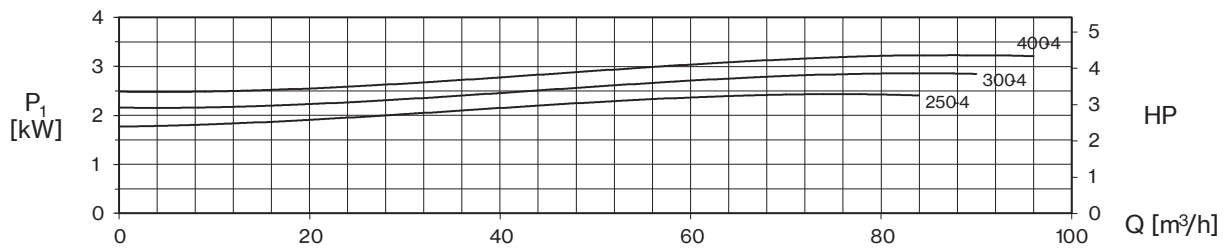
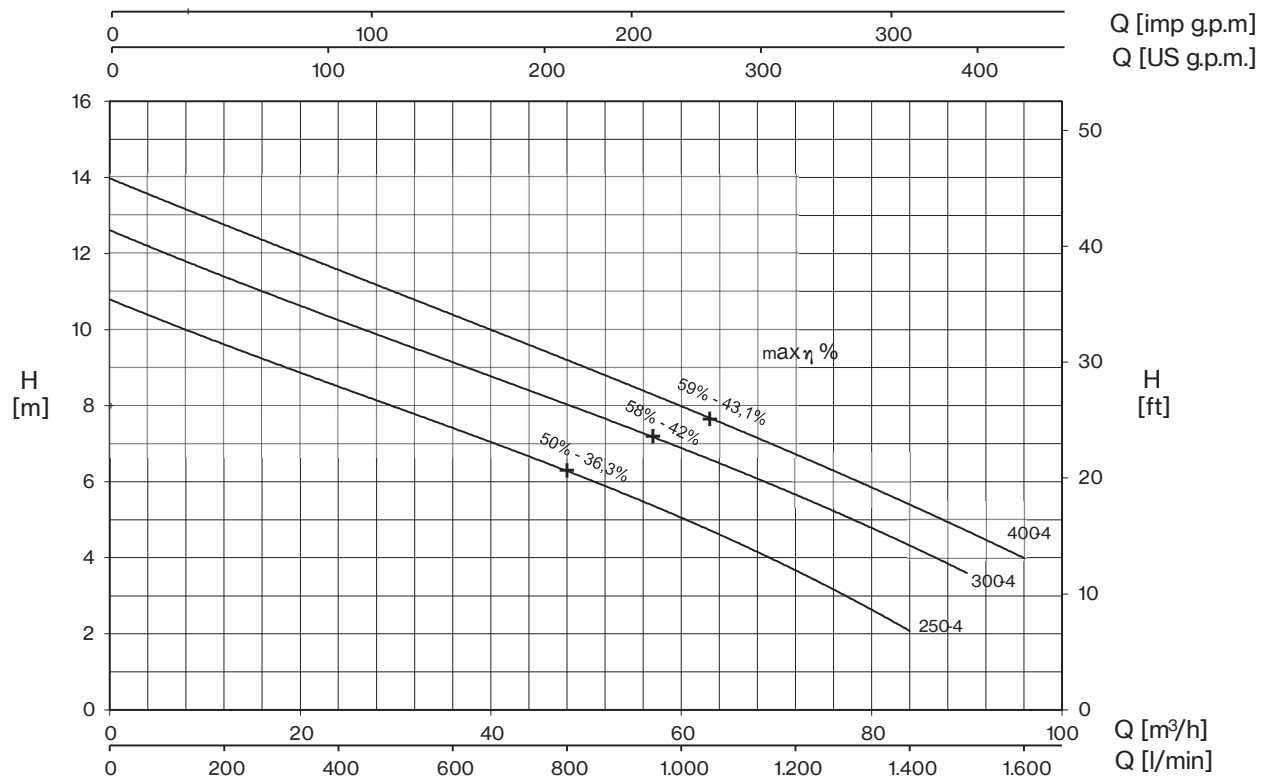
Motor

2 Poles induction motor	3- 230/400V-50Hz P ≤ 4kW 3- 400/690V-50Hz P > 4kW
Insulation class	F
Protection degree	IPX8

TYPE	LOTS			
	TRUCK		CONTAINER	
	PALLET (cm)	N° pumps	PALLET (cm)	N° pumps
DMT 250-4/750-4	85×110×190	12	100×120×190	12



DM4



TYPE	AMPERE			
	3x230 V 50 Hz (*)	3x400 V 50 Hz	230/400 V 50 Hz λ / Δ (*)	400/690 V 50 Hz λ / Δ
DMT 250-4	7,8	4,5	-	-
DMT 300-4	9,0	5,2	-	-
DMT 400-4	11,2	6,5	-	-

+ max η %

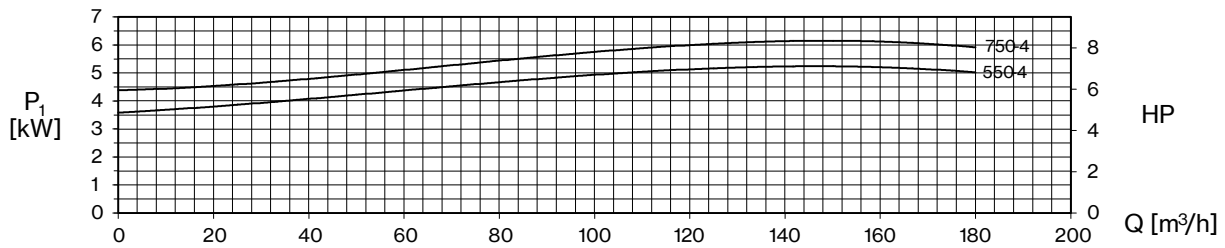
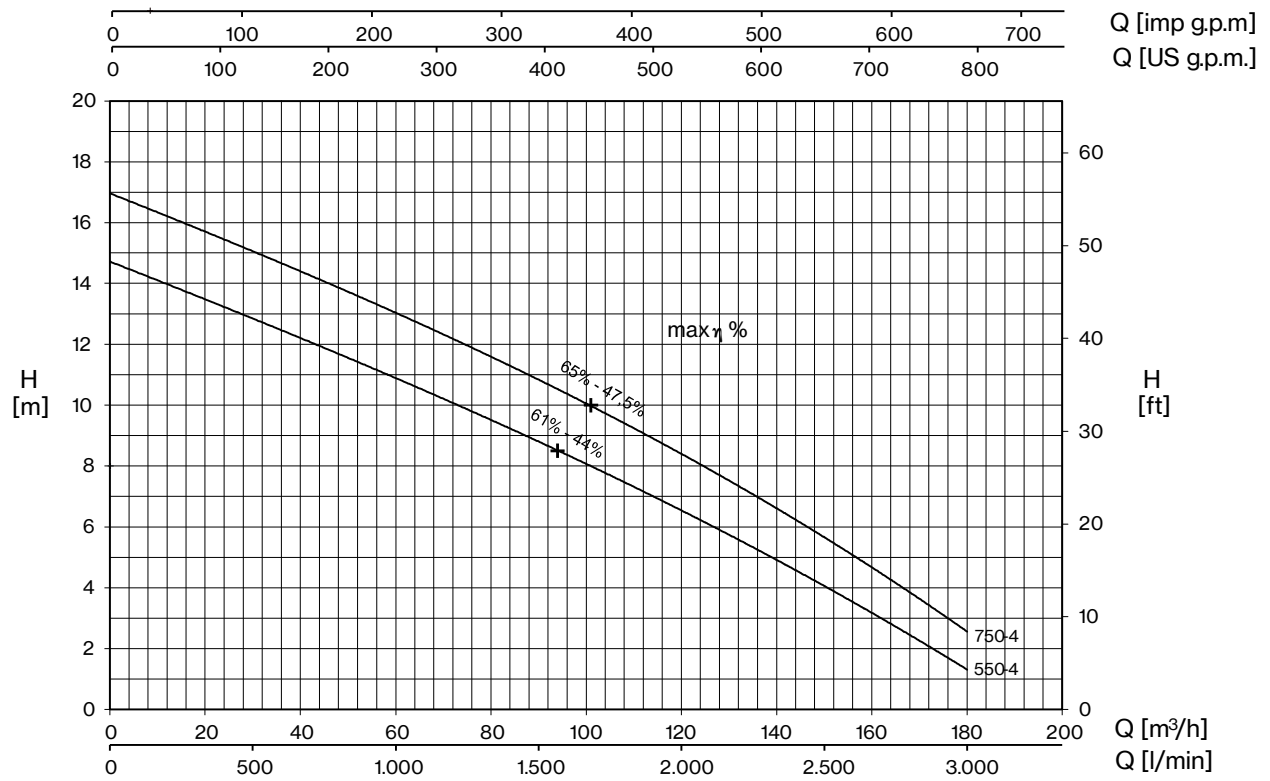
max hydraulic efficiency and respective total efficiency

(*) no standard execution

TYPE	P ₂		P ₁ (kW)	Q (m³/h - l/min)										
				0	12	24	36	48	60	72	84	90		
	HP	kW	3~	0	200	400	600	800	1000	1200	1400	1500	160	
DMT 250-4	2,5	1,8	2,4	10,8	9,6	8,5	7,4	6,3	5,1	3,6	2,1			
DMT 300-4	3	2,2	2,9	12,6	11,4	10,3	9,1	8,0	6,9	5,7	4,3	3,6		
DMT 400-4	4	3	3,2	14,0	12,7	11,6	10,4	9,2	8,0	6,7	5,4	4,7	4,0	



DM4



TYPE	AMPERE			
	3x230 V 50 Hz (*)	3x400 V 50 Hz	230/400 V 50 Hz λ / Δ (*)	400/690 V 50 Hz λ / Δ
DVT 550-4	-	9,4	16,3	9,4
DVT 750-4	-	11,8	20,4	11,8

+ max η %

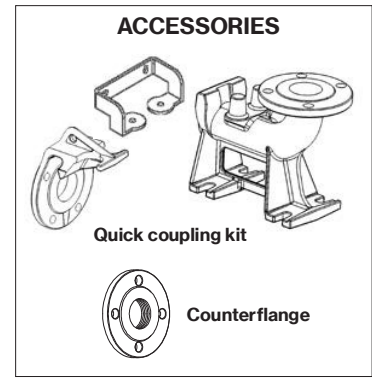
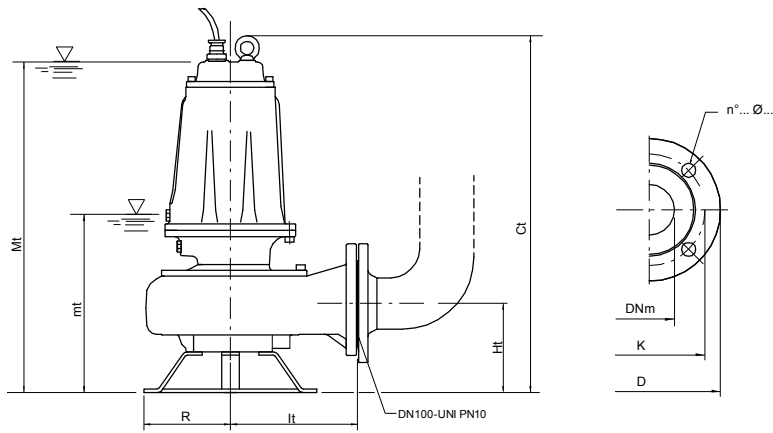
max hydraulic efficiency and respective total efficiency

(*) no standard execution

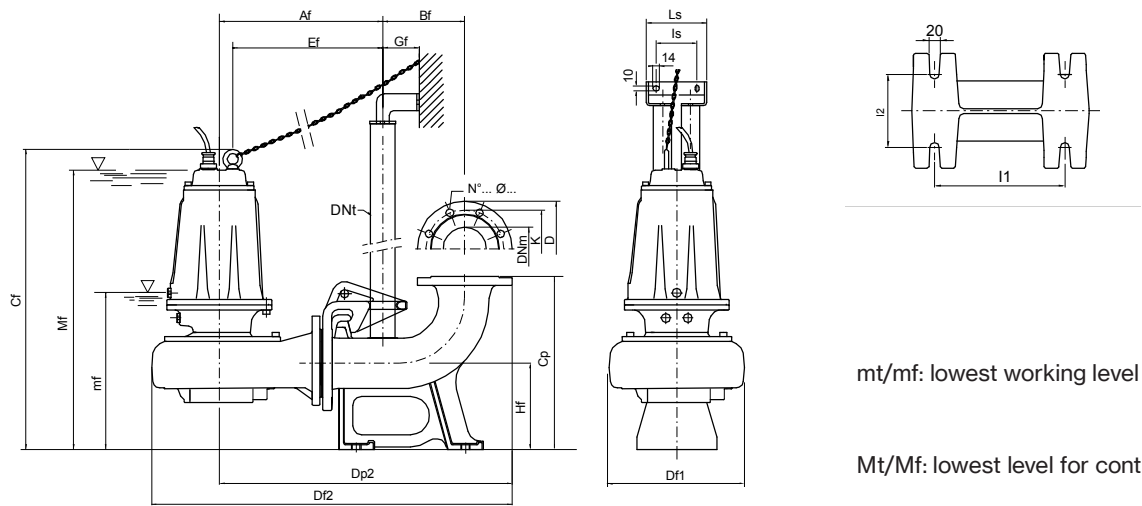
TYPE	P2		P1 (kW)	Q (m³/h - l/min)															
				0	12	24	36	48	60	72	84	96	108	120	132	144	156	168	180
	HP	kW	3~	0	200	400	600	800	1000	1200	1400	1600	1800	2000	2200	2400	2600	2800	3000
DMT 550-4	5,5	4	5,2	14,7	14,0	13,2	12,5	11,7	10,9	10,1	9,2	8,3	7,5	6,5	5,6	4,6	3,6	2,4	1,3
DMT 750-4	7,5	5,5	6,1	17,0	16,2	15,4	14,7	13,8	13,0	12,2	11,4	10,4	9,4	8,4	7,3	6,2	5,1	3,8	2,6



DM4



TYPE	DIMENSIONS (mm)							Kg
	Ct	Ht	R	It	mt	Mt	DNm	
DMT 250-4	660	165	160	235	300	614	100	71,5
DMT 300-4	660	165	160	235	300	614	100	74
DMT 400-4	660	165	160	235	300	614	100	77,5
DMT 550-4	715	195	180	276	385	695	100	104
DMT 750-4	715	195	180	276	385	695	100	107,5



mt/mf: lowest working level

Mt/Mf: lowest level for continuous duty

TYPE	DIMENSIONS (mm)																	
	Af	Bf	Cf	Cp	Df1	Df2	Dp2	DNT	Ef	Gf	Hf	I1	I2	Is	Ls	mf	Mf	DNm
DMT 250-4/P	378	190	695	400	317	835	678	2"	347	85	200	250	140	130	180	335	650	100
DMT 300-4/P	378	190	695	400	317	835	678	2"	347	85	200	250	140	130	180	335	650	100
DMT 400-4/P	378	190	695	400	317	835	678	2"	347	85	200	250	140	130	180	335	650	100
DMT 550-4/P	419	190	755	400	371	900	719	2"	384	85	200	250	140	130	180	390	700	100
DMT 750-4/P	419	190	755	400	371	900	719	2"	384	85	200	250	140	130	180	390	700	100

Flange UNI PN 10 (mm)			
DNm	K	D	n°... Ø...
100	180	220	8... 18...

TYPE	PROTECTION		CONTROL PANEL		
	1 x 230 V	3 x 400 V	1 x 230 V	3 x 400 V	400 / 690 V
DMT 250-4		PT 40-50/5.7-9.1		QSMT 10	
DMT 300-4		PT 40-50/5.7-9.1		QSMT 10	
DMT 400-4		PT 40-50/5.7-9.1		QSMT 10	
DMT 550-4		PT 55-75/8.6-13.5		QSMT 10	
DMT 750-4		PT 100/12.5-16.5		QSMT 10	QST 7

