

50Hz



GENERAL CATALOGUE

Edition 2022

www.pentax-pumps.it

Where there's water there's Pentax



Viale dell'Industria, 1
37040 Veronella (VR) - Italia
Tel. +39 0442 489500
Fax +39 0442 489510
com@pentax-pumps.it
www.pentax-pumps.it

PENTAX s.p.a.



CMG-CMGX ~2900 r.p.m.

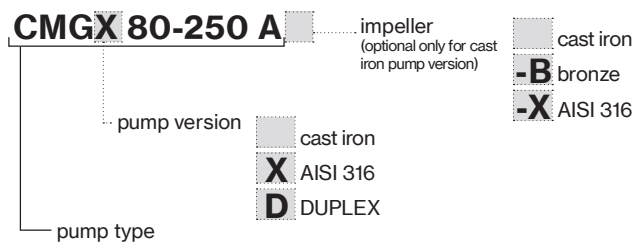
Centrifugal EN 733



Monobloc horizontal centrifugal pumps, constructed in compliance with EN 733 standards, with stub-shaft and bracket for coupling to standard motors; widely used in water supplies, pressurisation and fire-fighting systems; standard supply with counter-flange.

Construction features	
Pump body	cast iron (CMG) stainless steel AISI 316 (CMGX)
Motor bracket	cast iron
Impeller	cast iron, bronze, steel (CMG), steel (CMGX)
Mechanical seal	ceramic-graphite
Pump shaft end	stainless steel AISI 316
Liquid temperature	-10 ÷ +90 °C
Operating pressure	max 10 bar

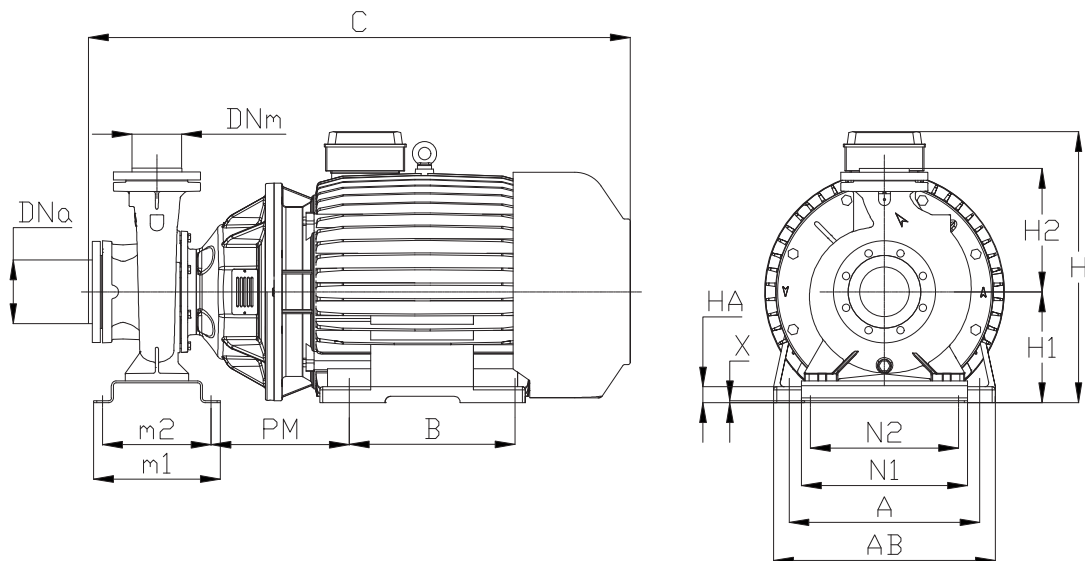
Motor	
2 Poles induction motor	3- 400/690V-50Hz
Insulation class	F
Protection degree	IPX5



CMG-CMGX ~ 2900 r.p.m.

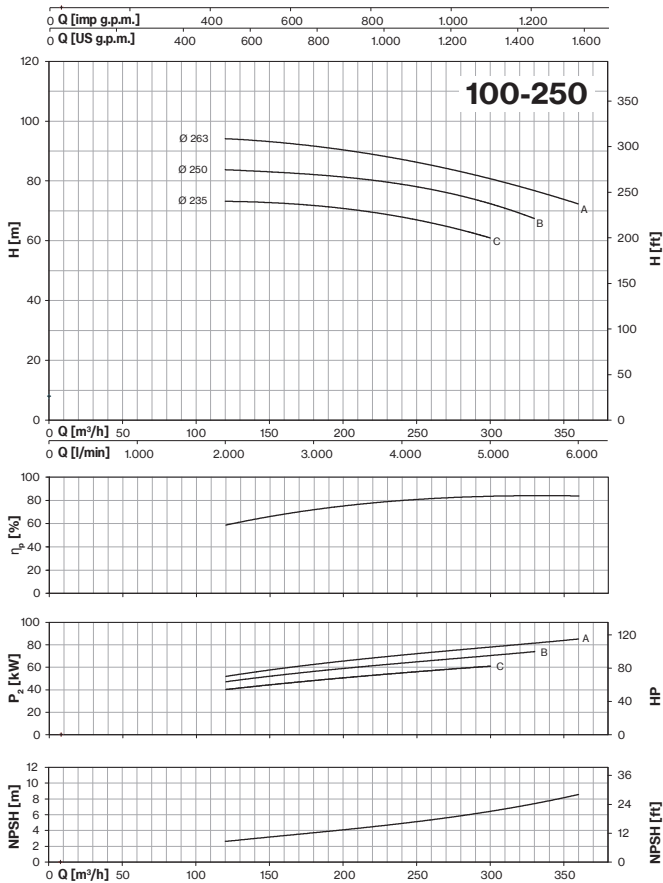
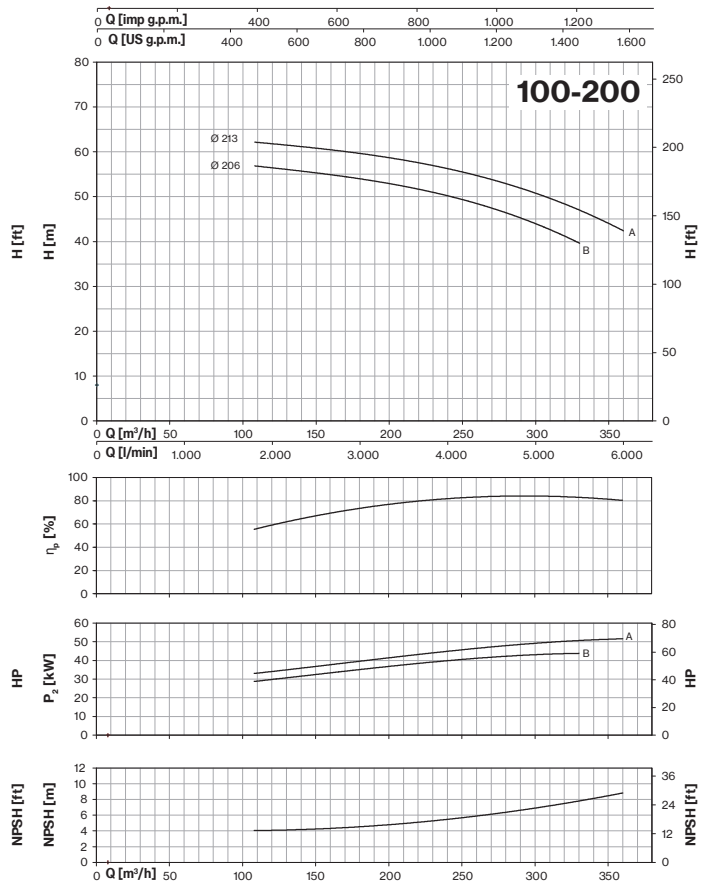
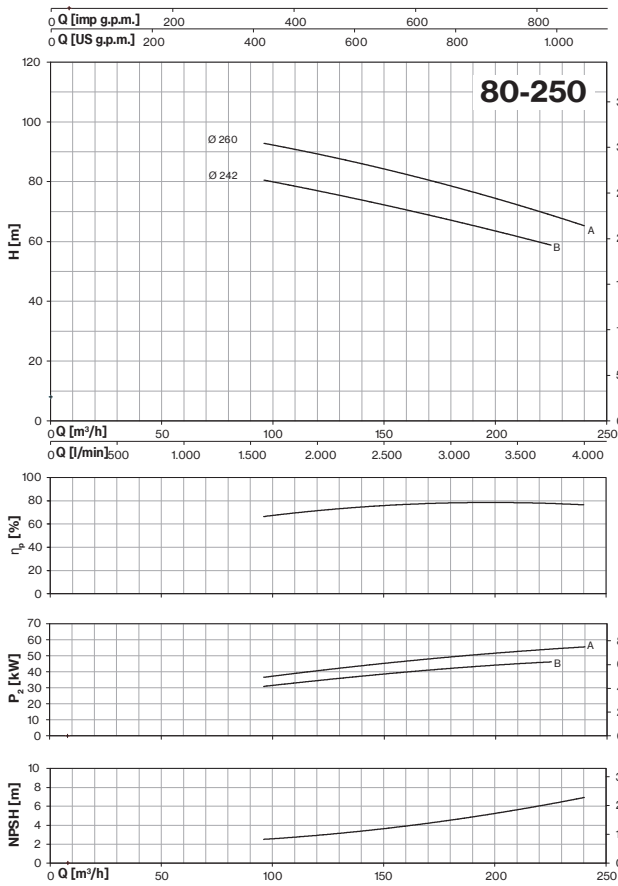
Centrifugal EN 733

TYPE	P ₂ nom. kW	Motor Size	Q (m ³ /h - l/min)																		
			0	96	108	120	132	138	144	156	168	180	195	210	225	240	255	270	300	330	360
			0	1600	1800	2000	2200	2300	2400	2600	2800	3000	3250	3500	3750	4000	4250	4500	5000	5500	6000
			H (m) pump input power (kW)																		
80-250B	45	225M	77,2 14,01	80,0 30,93	79,0 32,60	77,5 34,34	75,3 36,13	74,2 37,02	73,1 37,86	71,0 39,38	69,0 40,78	67,0 42,10	64,5 43,60	61,8 44,94	58,8 46,15						
80-250A	55	250M	90,0 16,74	92,8 36,56	91,1 38,57	89,3 40,54	87,4 42,46	86,4 43,39	85,4 44,31	83,1 46,12	80,7 47,81	78,5 49,29	75,7 50,92	72,4 52,59	68,8 54,18	65,2 55,50					
100-200B	45	225M	56,1 21,75		56,8 28,84	56,5 29,78	56,1 30,74	55,9 31,24	55,6 31,75	55,1 32,81	54,5 33,89	53,9 35,04	53,1 36,50	52,2 37,82	51,4 38,89	50,4 39,85	49,0 40,77	47,5 41,60	43,8 42,92	39,7 43,82	
100-200A	55	250M	61,1 24,57		62,2 33,04	61,8 34,07	61,5 35,11	61,2 35,64	61,0 36,18	60,5 37,28	59,9 38,39	59,5 39,49	58,9 40,86	58,3 42,23	57,4 43,60	56,4 44,97	55,2 46,20	53,8 47,28	50,6 49,05	46,8 50,53	42,5 51,62
100-250C	55	250M	71,9			73,2	73,1	73,0	72,9	72,6	72,2	71,8	71,1	70,3	69,3	67,9	66,4	64,7	61,0		
	75	280S	24,75			40,12	41,93	42,84	43,70	45,28	46,77	48,21	49,94	51,65	53,38	55,05	56,66	58,19	60,99		
100-250B	75	280S	83,6 29,69			83,7 47,10	83,5 49,06	83,4 50,04	83,2 51,01	82,9 52,92	82,5 54,76	82,1 56,47	81,4 58,46	80,8 60,26	80,0 61,86	79,0 63,49	77,9 65,17	76,4 66,93	72,0 70,91	67,6 73,78	
100-250A	90	280M	93,5 32,71			93,9 51,99	93,7 54,14	93,5 55,23	93,4 56,31	92,9 58,48	92,4 60,60	91,8 62,57	90,9 64,88	89,9 66,97	88,8 68,84	87,4 70,81	85,7 72,81	84,0 74,73	80,4 78,17	75,8 81,33	73,2 85,53

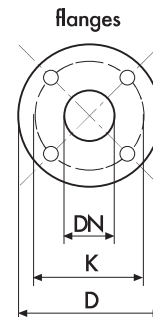


TYPE	DIMENSIONS (mm)															Kg
	DNa	DNm	m1	m2	N2	N1	H1	H2	H	A	AB	B	PM	C	HA	
80-250B	100	80	200	120	315	406	225	317	550	356	435	311	356	1130	28	418
80-250A	100	80	320	280	360	420	280	317	650	406	485	349	325	1240	58	505
100-200B	125	100	200	120	280	360	225	321	550	356	435	311	356	1130	28	417
100-200A	125	100	320	280	360	420	280	321	650	406	485	349	325	1240	60	505
100-250C	125	100	320	280	360	420	280	321	675	406	485	349	325	1315	60	516
100-250B	125	100	320	280	360	420	280	321	675	457	545	368	347	1315	35	645
100-250A	125	100	320	280	360	420	280	321	675	457	545	419	347	1370	35	680







DIMENSIONS (mm)				
DN	D	K	holes	
			n°	Ø
80	200	160	8	18
100	220	180	8	18
125	250	210	8	18



CMG Series-Mechanical seal and bearings

MECHANICAL SEAL	PUMP MODEL	SHAFT Ø		STANDARD MATERIAL	OPTIONAL				
	CMG80-250B, CMG80-250A, CMG100-200B, CMG100-200A, CMG100-250C, CMG100-250B, CMG100-250A	45mm	<i>Rotating face</i>	CrNi-steel	CrNi-steel	CrNi-steel	SiC	SiC	
			<i>Stationary face</i>	Graphite	Graphite	Graphite	SiC	SiC	
			<i>Elastomer</i>	NBR	EPDM	FKM	EPDM	FKM	

MOTOR BEARINGS	PUMP MODEL	TYPE	
	CMG80-250B, CMG100-200B	6313-ZZ C3	6313-ZZ C3
	CMG80-250A, CMG100-200A, CMG100-250C, CMG100-250B, CMG100-250A	6314-ZZ C3	6314-ZZ C3

